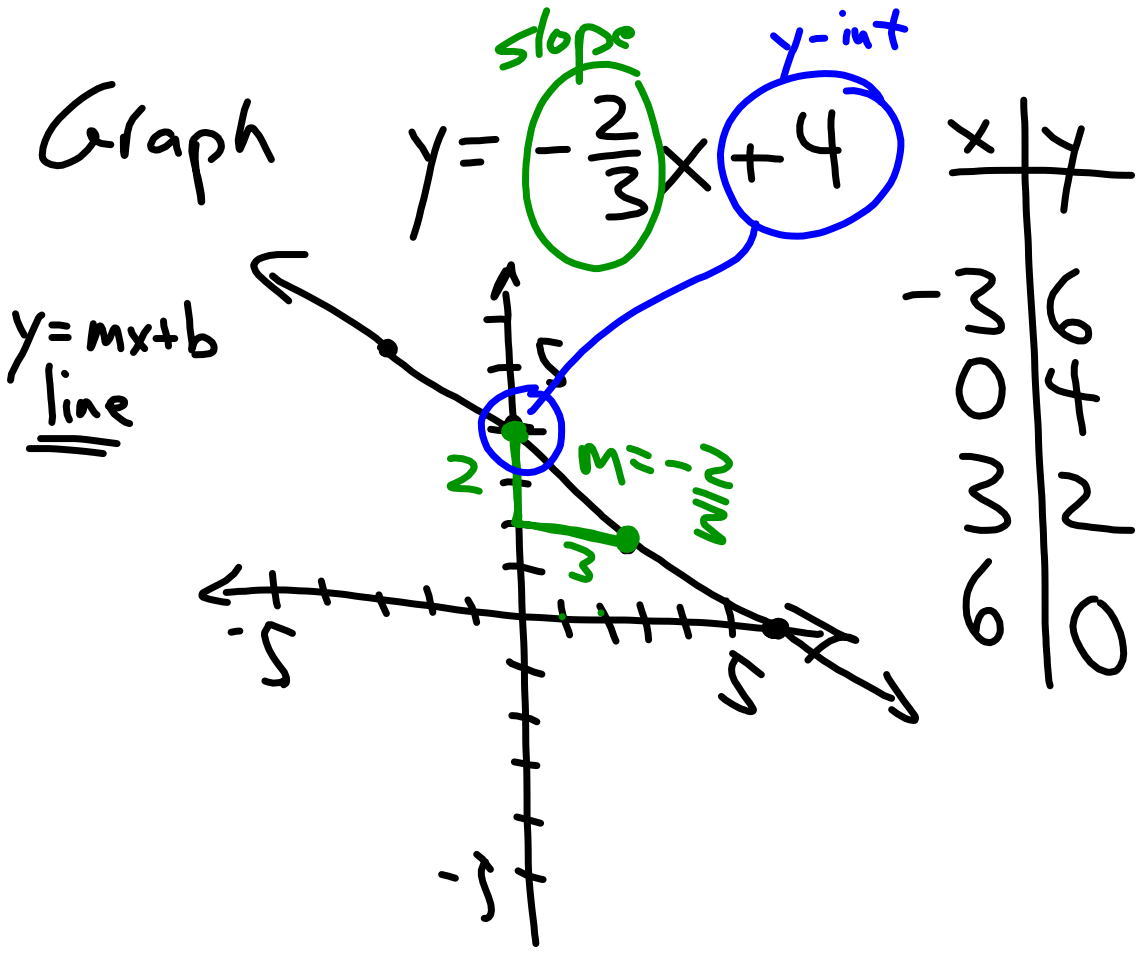


$$\text{Line 1 } m = \frac{3}{4}$$

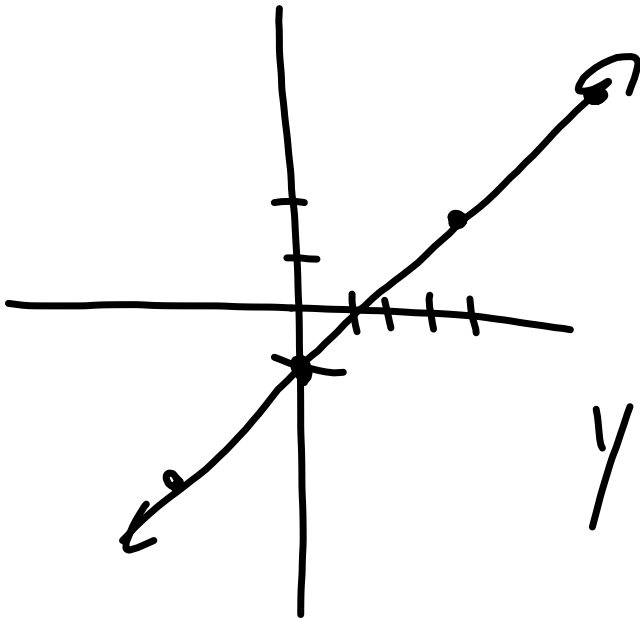
Line 2 is perpendicular  
to line 1.  $m = -\frac{4}{3}$

$$m = -\frac{1}{2} \rightarrow \text{perp } m = \frac{2}{1} \text{ or } 2$$



Graph  
 $y = \frac{3}{4}x - 1$

x	y
0	-1
4	2



$(3, -1)$   $(5, 2)$

$y = \square x + b$