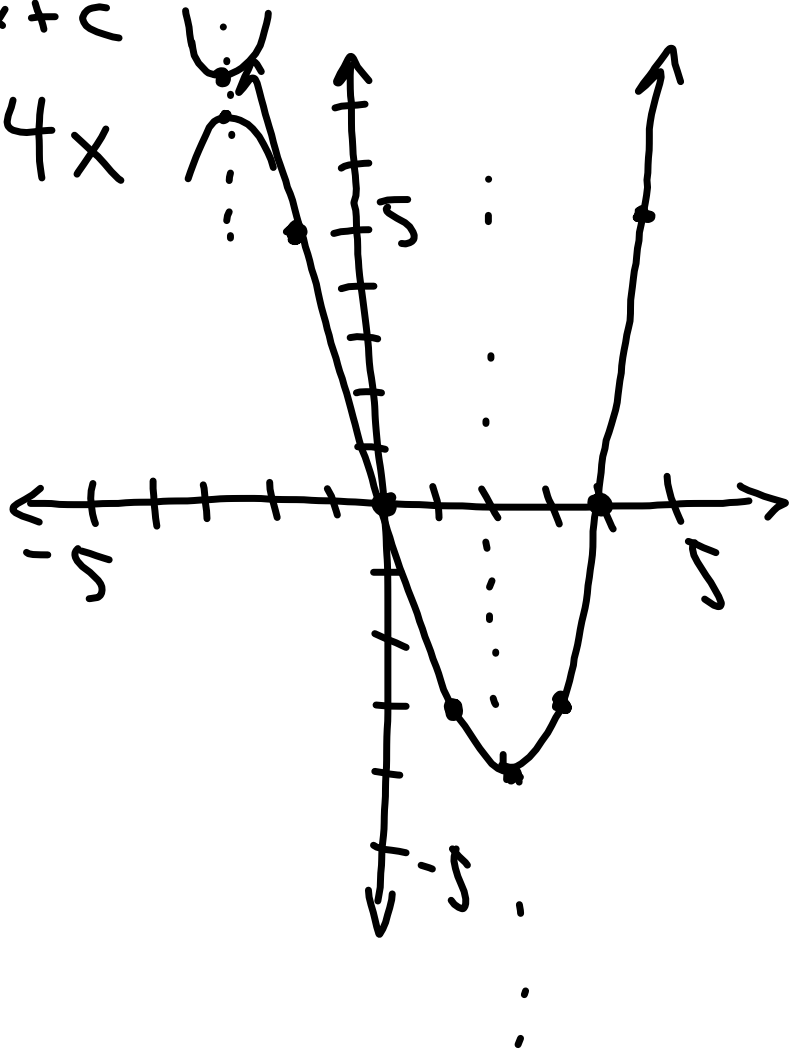


$$y = ax^2 + bx + c$$

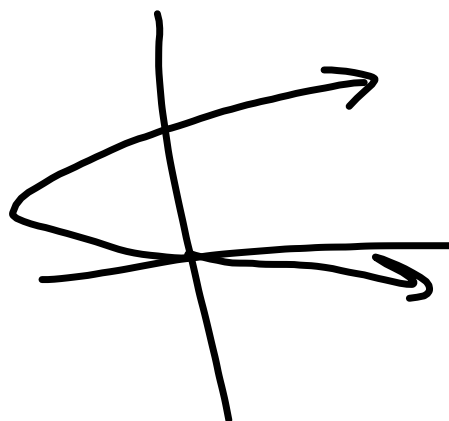
$$y = x^2 - 4x$$

x	y
1	5
0	0
-1	3
2	-1
3	-3



$$x = y^2 - 4y$$

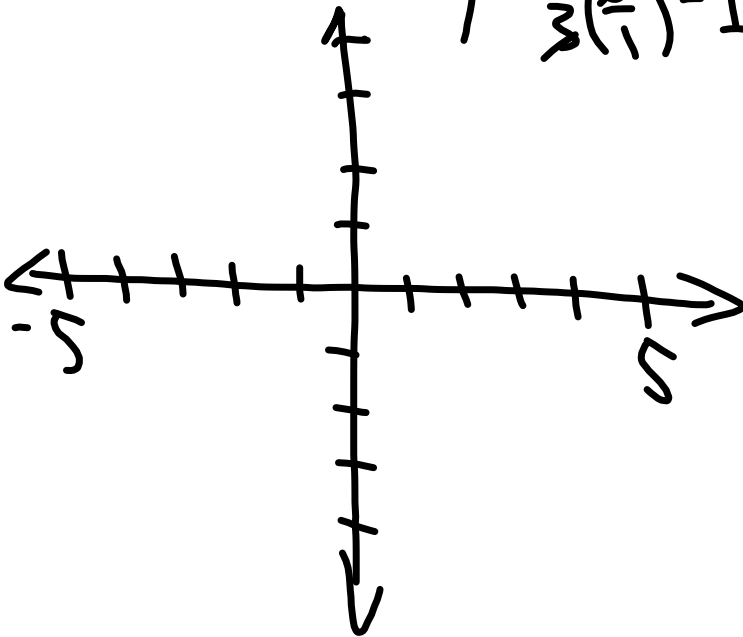
x	y
0	0
3	1
3	3



$$y = \frac{2}{3}x - 1$$

$$y = -3x + 4$$

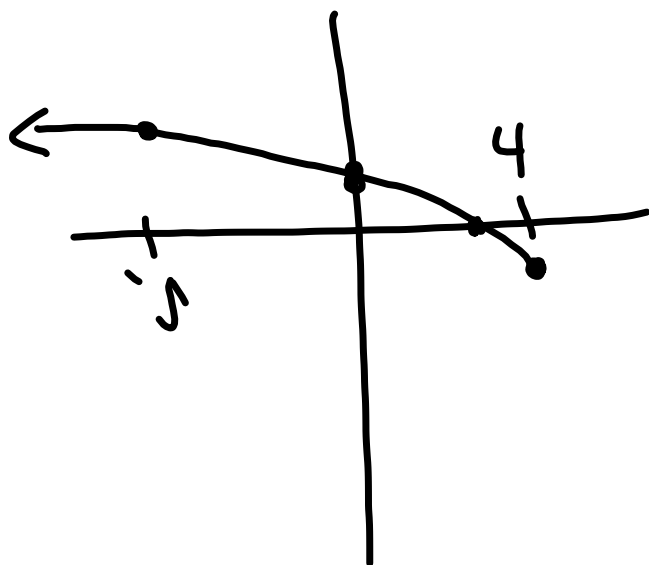
$$y = \frac{2}{3}\left(\frac{6}{1}\right) - 1$$



x	y
-3	-1
0	1
3	1
6	1

$$y = \sqrt{4-x} - 1$$

$$y = \sqrt{4-(-1)} - 1$$



x	y
4	-1
3	0
2	1
1	2